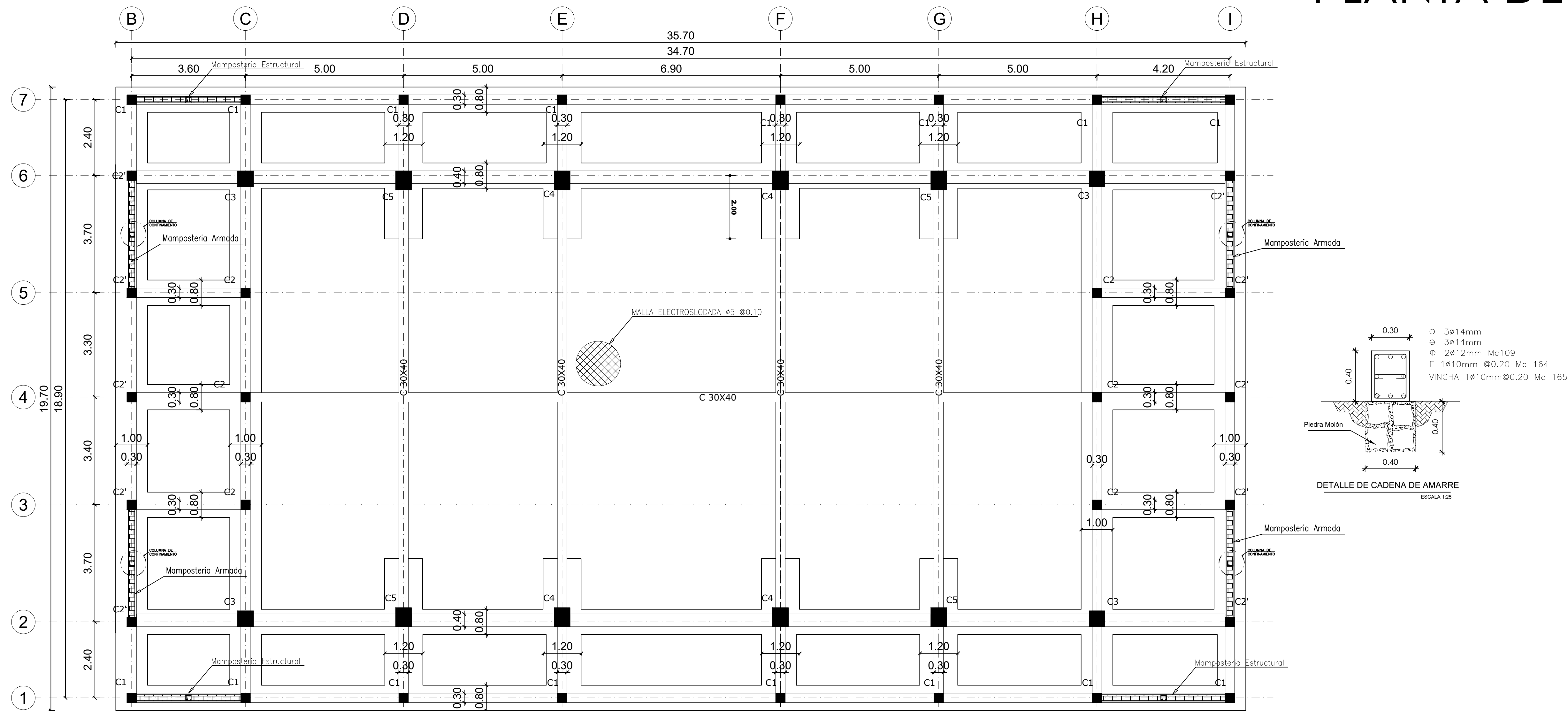


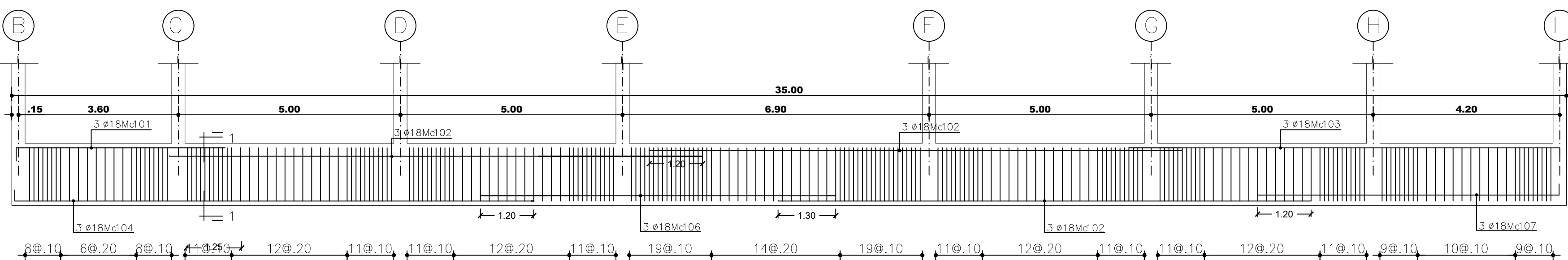
SALA DE USO MULTIPLE - COMEDOR

PLANTA DE CIMENTACIÓN



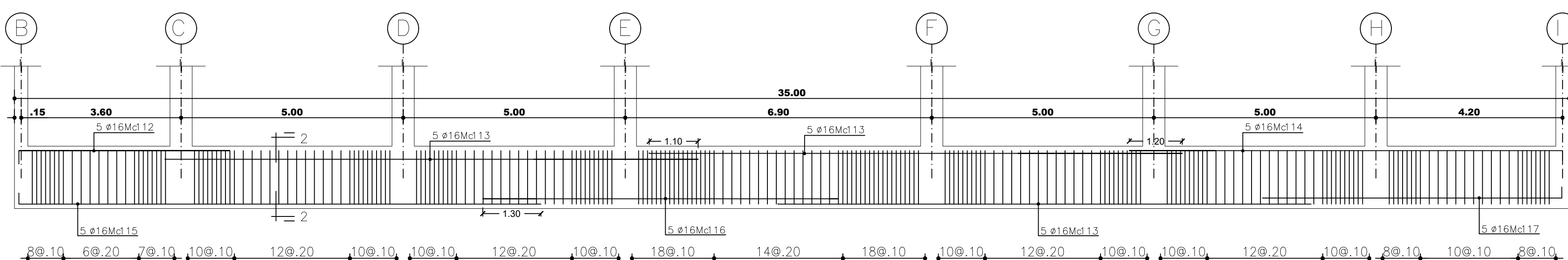
PLANTA DE CIMENTACION

ESCALA 1:100



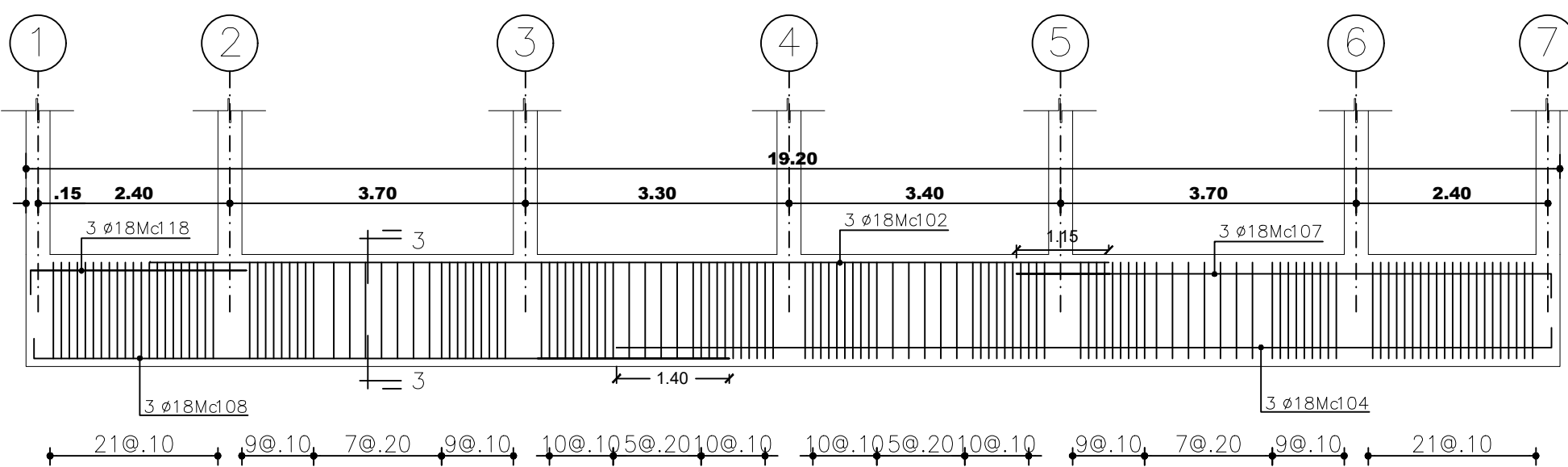
VIGA 1-7

ESC. 1:100



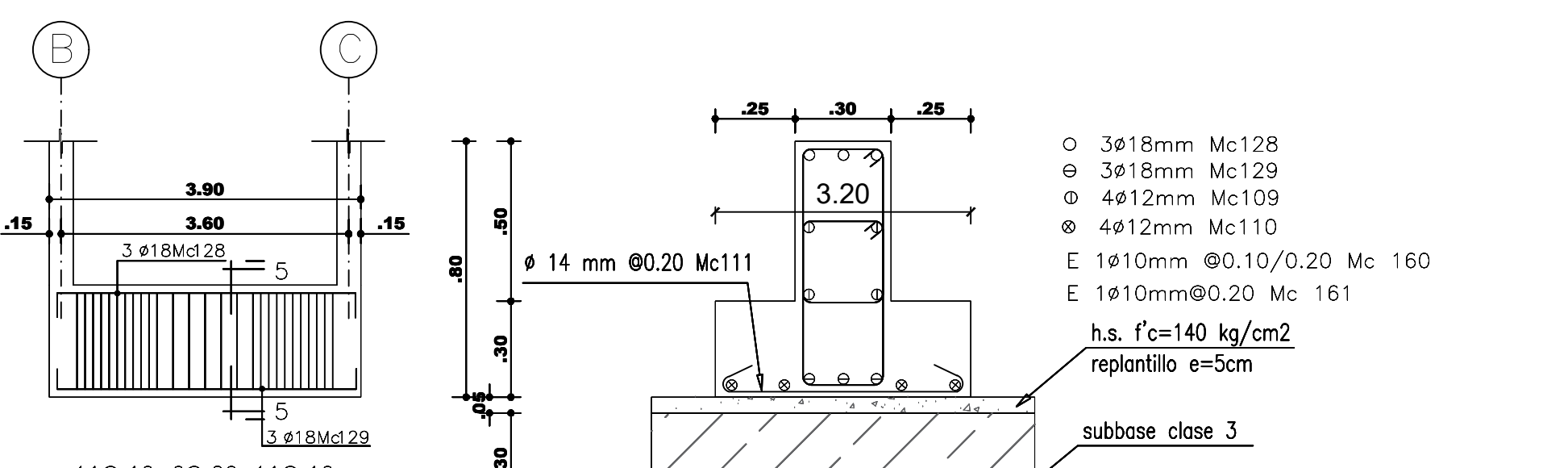
VIGA 2-6

ESC. 1:100



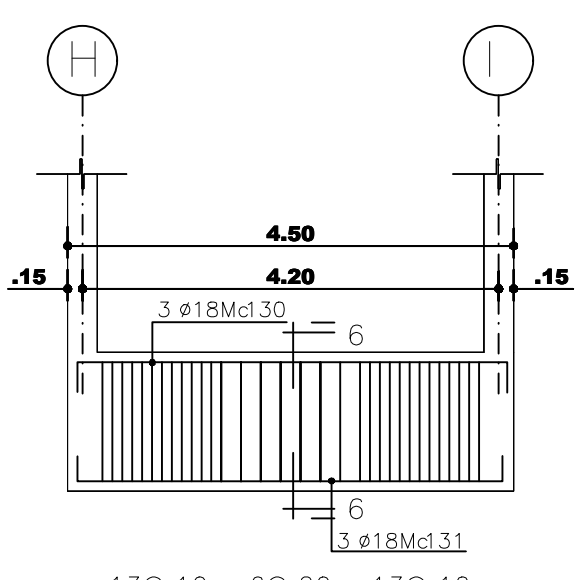
VIGA B-C-H-I

ESC. 1:100



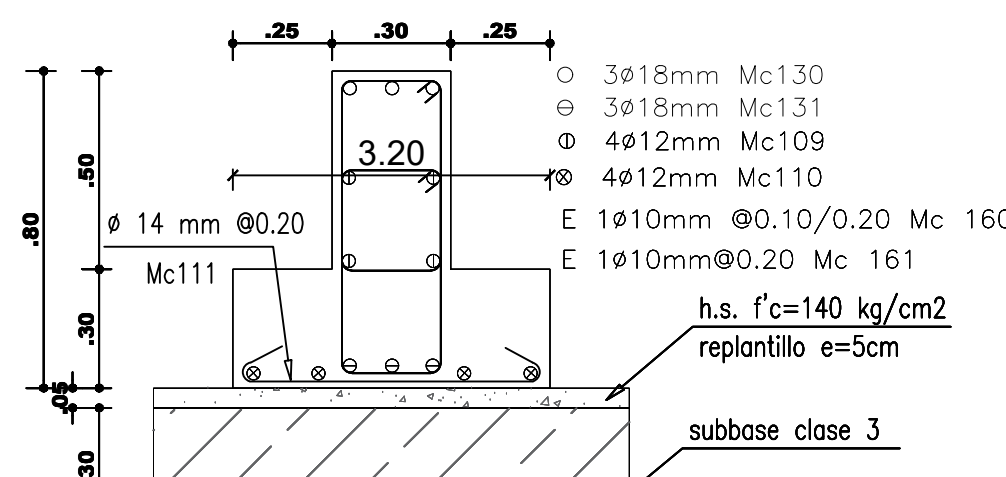
VIGA 3-4-5

ESC. 1:100



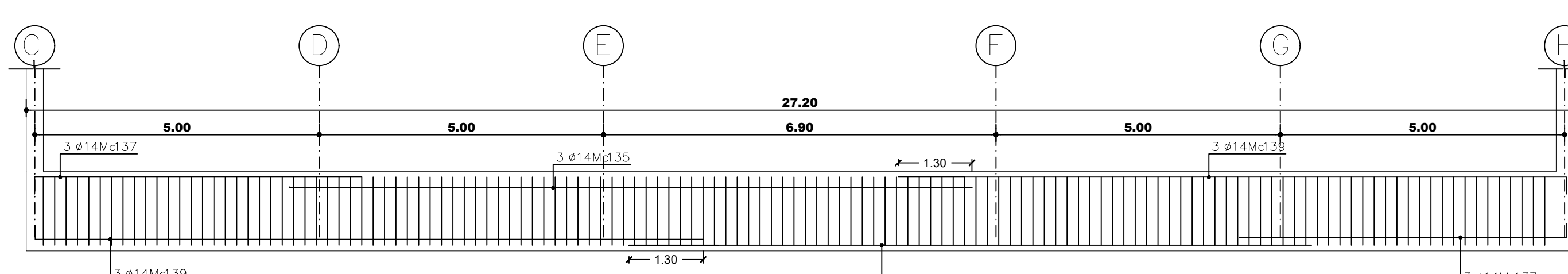
VIGA 3-4-5

ESC. 1:100



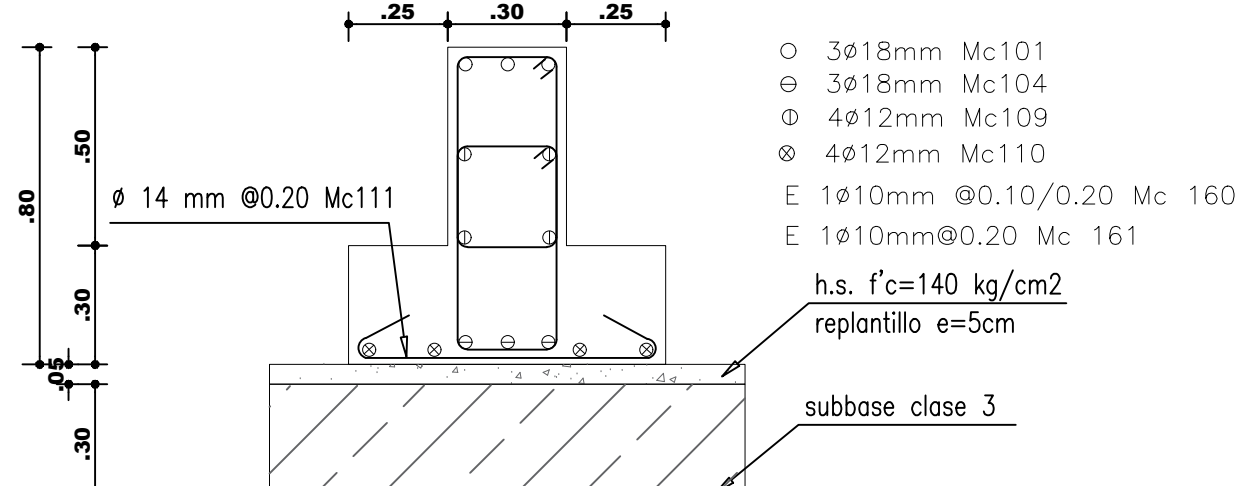
VIGA 3-4-5

ESC. 1:100



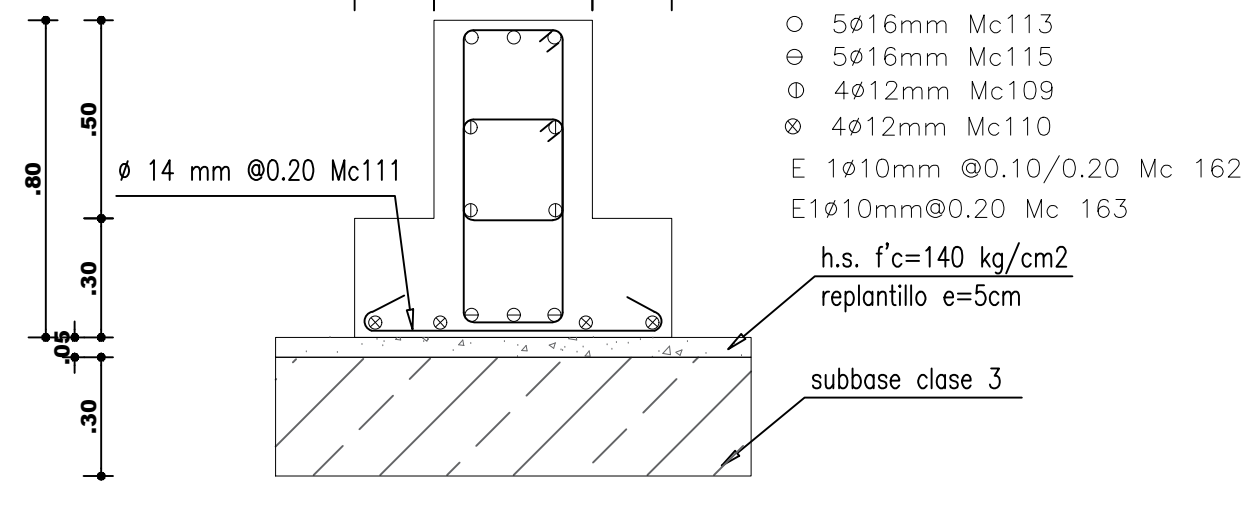
VIGA 4

ESC. 1:100



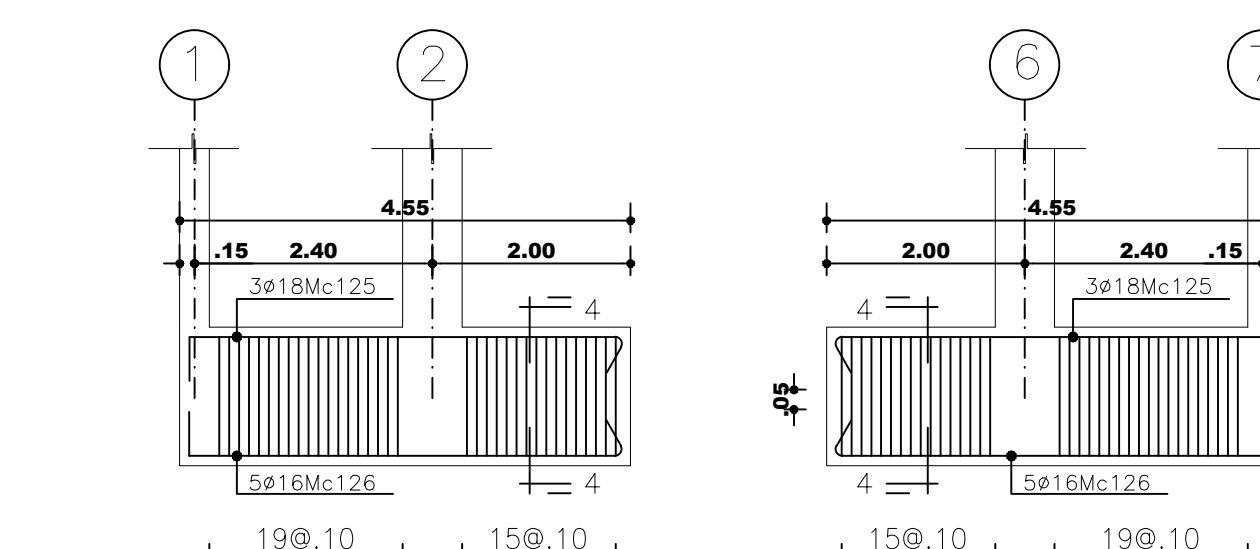
CORTE 1-1

ESC. 1:25



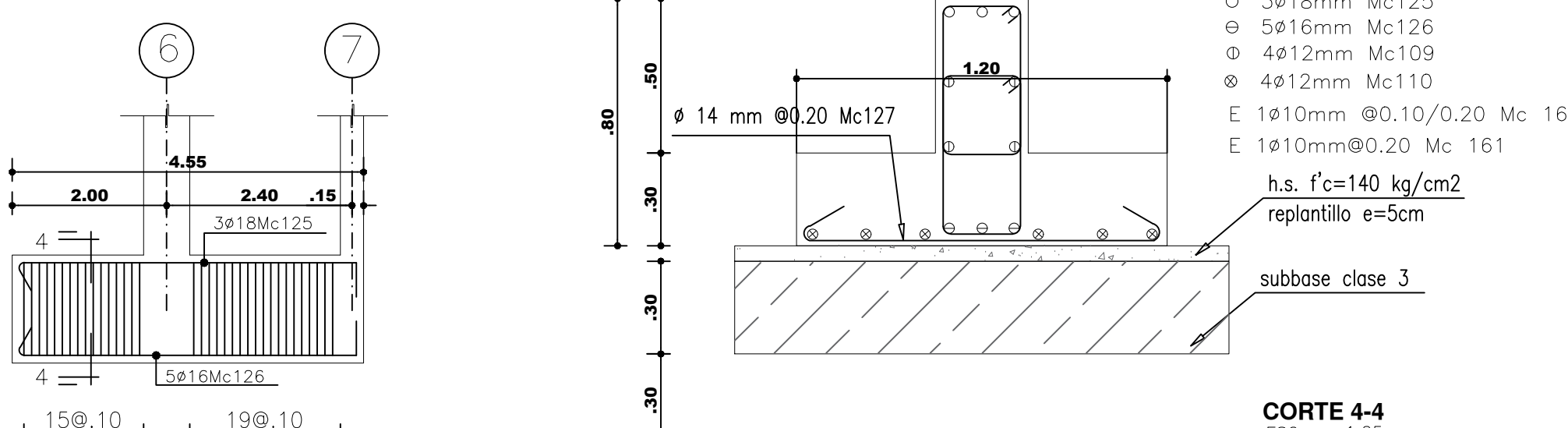
CORTE 2-2

ESC. 1:25



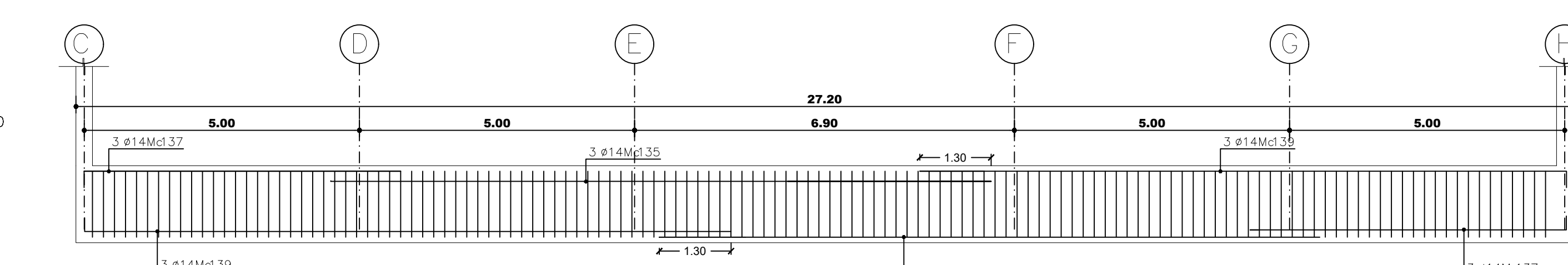
VIGA D-E-F-G

ESC. 1:100



VIGA D-E-F-G

ESC. 1:100



VIGA 4

ESC. 1:100

PLANILLA DE ACERO										
MC	TIPO	Ø	No	DIMENSIONES			G	long. Des.	long. Total	Observ.
				A	B	C				
Cimentación										
101	L	18	6	4.70	0.30			5.00	30.00	
102	L	18	20	12.00				12.00	240.00	
103	L	18	6	9.70	0.30			10.00	60.00	
104	L	18	6	11.70	0.30			12.00	72.00	
105	L	18	6	8.00				8.00	48.00	
107	L	18	6	6.70	0.30			7.00	126.00	
108	L	18	12	8.70	0.30			9.00	108.00	
109	L	12	117	12.00				12.00	1400.73	
110	L	12	117	1				1.00	116.73	
111	G	14	876	0.70	0.15	0.15		1.00	876.00	
112	L	16	10	4.75	0.25			5.00	50.00	
113	L	16	30	12.00				12.00	360.00	
114	L	16	10	9.25	0.25			10.00	100.00	
115	L	16	10	11.75	0.25			12.00	120.00	
116	L	16	10	8.00				8.00	80.00	
117	L	16	10	6.75	0.25			7.00	70.00	
118	L	18	12	2.70	0.30			3.00	36.00	
124	G	14	384	0.90	0.15	0.15		1.20	465.80	
125	C	18	24	4.40	0.30		0.20	4.90	102.00	
126	C	16	40	4.40	0.25		0.20	4.85	104.00	
127	G	14	182	1.1	0.15	0.15		1.40	254.80	
128	C	18	9	3.75	0.20	0.20		4.15	37.15	
129	C	18	9	3.75	0.20	0.20		4.15	37.15	
130	C	18	9	4.00	0.20	0.20		4.40	39.60	
131	C	18	9	4.00	0.20	0.20		4.40	39.60	
132	L	14	24	11.8	0.2			12.00	288.00	
133	L	14	24	3.5	0.2			4.00	96.00	
135	L	14	6	12				12.00	72.00	
137	L	14	6	5.75	0.25			6.00	36.00	
139	L	14	6	11.8	0.2			12.00	72.00	
ESTRIBOS										
160	D	10	1420	0.20	0.70		0.10	2.00	2840.00	
161	D	10	252	0.2	0.2		0.10	1.50	252.00	
162	D	10	288	0.3	0.7		0.20	2.20	1056.00	
163	D	10	332	0.3	0.2		0.10	1.20	398.40	
164	D	10	335	0.2	0.2		0.10	0.60	60.00	
165	G	10	335	0.2			0.1	0.40	134.00	