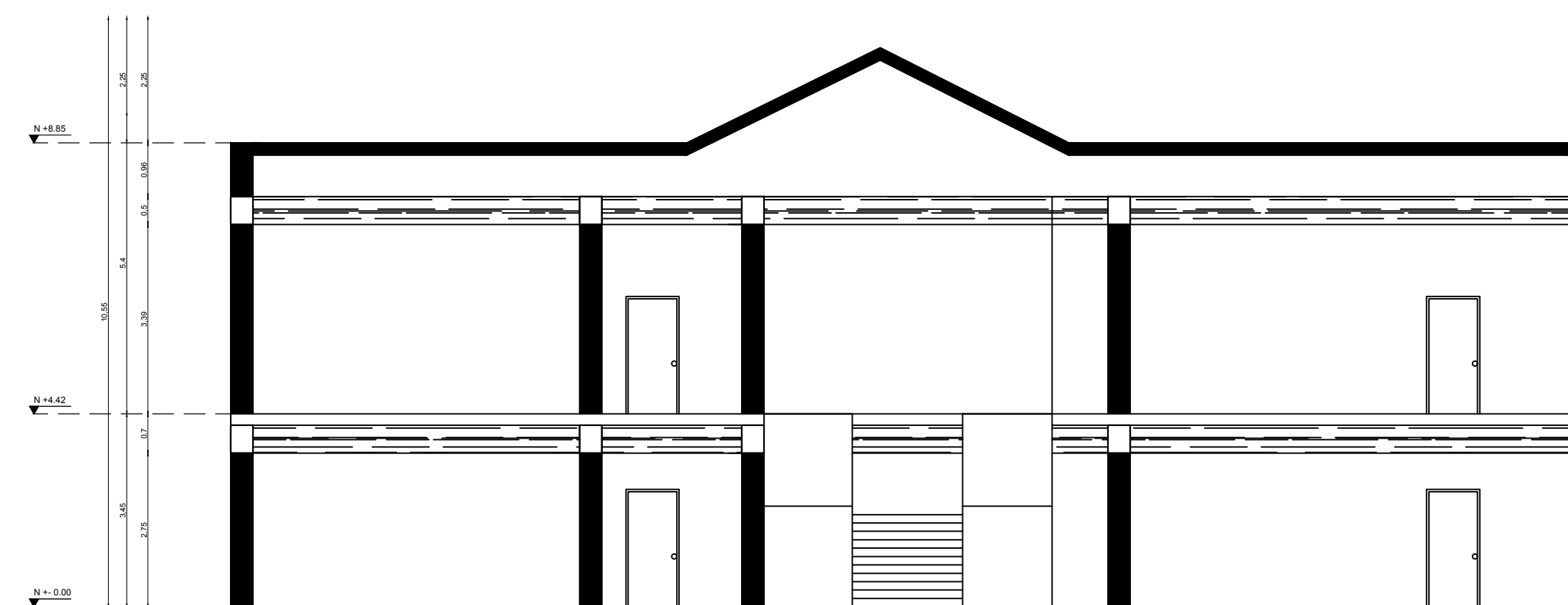


This architectural section drawing shows a building with a gabled roof. The left side features a gabled section with four arched windows on the upper floor and four rectangular windows on the lower floor. A thick vertical line indicates a structural break. To the right, a staircase is shown ascending from the lower floor to the upper floor. The drawing includes a vertical scale on the left with elevations: +0.00, +0.30, +0.60, +0.90, +1.20, +1.50, +1.80, +2.10, +2.40, +2.70, +3.00, +3.30, +3.60, +3.90, +4.20, +4.50, +4.80, +5.10, +5.40, +5.70, +6.00, +6.30, +6.60, +6.90, +7.20, +7.50, +7.80, +8.10, +8.40, +8.70, +9.00, +9.30, +9.60, +9.90, +10.20, +10.50, +10.80, +11.10, +11.40, +11.70, +12.00, +12.30, +12.60, +12.90, +13.20, +13.50, +13.80, +14.10, +14.40, +14.70, +15.00, +15.30, +15.60, +15.90, +16.20, +16.50, +16.80, +17.10, +17.40, +17.70, +18.00, +18.30, +18.60, +18.90, +19.20, +19.50, +19.80, +20.10, +20.40, +20.70, +21.00, +21.30, +21.60, +21.90, +22.20, +22.50, +22.80, +23.10, +23.40, +23.70, +24.00, +24.30, +24.60, +24.90, +25.20, +25.50, +25.80, +26.10, +26.40, +26.70, +27.00, +27.30, +27.60, +27.90, +28.20, +28.50, +28.80, +29.10, +29.40, +29.70, +30.00, +30.30, +30.60, +30.90, +31.20, +31.50, +31.80, +32.10, +32.40, +32.70, +33.00, +33.30, +33.60, +33.90, +34.20, +34.50, +34.80, +35.10, +35.40, +35.70, +36.00, +36.30, +36.60, +36.90, +37.20, +37.50, +37.80, +38.10, +38.40, +38.70, +39.00, +39.30, +39.60, +39.90, +40.20, +40.50, +40.80, +41.10, +41.40, +41.70, +42.00, +42.30, +42.60, +42.90, +43.20, +43.50, +43.80, +44.10, +44.40, +44.70, +45.00, +45.30, +45.60, +45.90, +46.20, +46.50, +46.80, +47.10, +47.40, +47.70, +48.00, +48.30, +48.60, +48.90, +49.20, +49.50, +49.80, +50.10, +50.40, +50.70, +51.00, +51.30, +51.60, +51.90, +52.20, +52.50, +52.80, +53.10, +53.40, +53.70, +54.00, +54.30, +54.60, +54.90, +55.20, +55.50, +55.80, +56.10, +56.40, +56.70, +57.00, +57.30, +57.60, +57.90, +58.20, +58.50, +58.80, +59.10, +59.40, +59.70, +60.00, +60.30, +60.60, +60.90, +61.20, +61.50, +61.80, +62.10, +62.40, +62.70, +63.00, +63.30, +63.60, +63.90, +64.20, +64.50, +64.80, +65.10, +65.40, +65.70, +66.00, +66.30, +66.60, +66.90, +67.20, +67.50, +67.80, +68.10, +68.40, +68.70, +69.00, +69.30, +69.60, +69.90, +70.20, +70.50, +70.80, +71.10, +71.40, +71.70, +72.00, +72.30, +72.60, +72.90, +73.20, +73.50, +73.80, +74.10, +74.40, +74.70, +75.00, +75.30, +75.60, +75.90, +76.20, +76.50, +76.80, +77.10, +77.40, +77.70, +78.00, +78.30, +78.60, +78.90, +79.20, +79.50, +79.80, +80.10, +80.40, +80.70, +81.00, +81.30, +81.60, +81.90, +82.20, +82.50, +82.80, +83.10, +83.40, +83.70, +84.00, +84.30, +84.60, +84.90, +85.20, +85.50, +85.80, +86.10, +86.40, +86.70, +87.00, +87.30, +87.60, +87.90, +88.20, +88.50, +88.80, +89.10, +89.40, +89.70, +90.00, +90.30, +90.60, +90.90, +91.20, +91.50, +91.80, +92.10, +92.40, +92.70, +93.00, +93.30, +93.60, +93.90, +94.20, +94.50, +94.80, +95.10, +95.40, +95.70, +96.00, +96.30, +96.60, +96.90, +97.20, +97.50, +97.80, +98.10, +98.40, +98.70, +99.00, +99.30, +99.60, +99.90, +100.20, +100.50, +100.80, +101.10, +101.40, +101.70, +102.00, +102.30, +102.60, +102.90, +103.20, +103.50, +103.80, +104.10, +104.40, +104.70, +105.00, +105.30, +105.60, +105.90, +106.20, +106.50, +106.80, +107.10, +107.40, +107.70, +108.00, +108.30, +108.60, +108.90, +109.20, +109.50, +109.80, +110.10, +110.40, +110.70, +111.00, +111.30, +111.60, +111.90, +112.20, +112.50, +112.80, +113.10, +113.40, +113.70, +114.00, +114.30, +114.60, +114.90, +115.20, +115.50, +115.80, +116.10, +116.40, +116.70, +117.00, +117.30, +117.60, +117.90, +118.20, +118.50, +118.80, +119.10, +119.40, +119.70, +120.00, +120.30, +120.60, +120.90, +121.20, +121.50, +121.80, +122.10, +122.40, +122.70, +123.00, +123.30, +123.60, +123.90, +124.20, +124.50, +124.80, +125.10, +125.40, +125.70, +126.00, +126.30, +126.60, +126.90, +127.20, +127.50, +127.80, +128.10, +128.40, +128.70, +129.00, +129.30, +129.60, +129.90, +130.20, +130.50, +130.80, +131.10, +131.40, +131.70, +132.00, +132.30, +132.60, +132.90, +133.20, +133.50, +133.80, +134.10, +134.40, +134.70, +135.00, +135.30, +135.60, +135.90, +136.20, +136.50, +136.80, +137.10, +137.40, +137.70, +138.00, +138.30, +138.60, +138.90, +139.20, +139.50, +139.80, +140.10, +140.40, +140.70, +141.00, +141.30, +141.60, +141.90, +142.20, +142.50, +142.80, +143.10, +143.40, +143.70, +144.00, +144.30, +144.60, +144.90, +145.20, +145.50, +145.80, +146.10, +146.40, +146.70, +147.00, +147.30, +147.60, +147.90, +148.20, +148.50, +148.80, +149.10, +149.40, +149.70, +150.00, +150.30, +150.60, +150.90, +151.20, +151.50, +151.80, +152.10, +152.40, +152.70, +153.00, +153.30, +153.60, +153.90, +154.20, +154.50, +154.80, +155.10, +155.40, +155.70, +156.00, +156.30, +156.60, +156.90, +157.20, +157.50, +157.80, +158.10, +158.40, +158.70, +159.00, +159.30, +159.60, +159.90, +160.20, +160.50, +160.80, +161.10, +161.40, +161.70, +162.00, +162.30, +162.60, +162.90, +163.20, +1

ESC: _____ 1 : 100



ING. LUIS PERÉZ
ESPECIALISTA ARQUITECTÓNICO
MINEDUC

This is an aerial map of a residential area in Krasnodar. A specific building is highlighted in red, indicating the research object. The map shows surrounding streets, including 'UL. 1905 G. YERZHENKO' and 'UL. 1905 G. YERZHENKO', and a roundabout. A north arrow is present in the top right corner.

ESCALA:	FECHA:	LÁMINA:
INDICADAS	2019	A-ED-Nº11

SELLOS MUNICIPALES: